



Dongguan Maywah Electronics Co.,Ltd.

Solar Smart Micro Inverter



Dongguan Maywah Electronics Co., Ltd.

Tel : +86-769-82585619

E-mail : sales@maywahcn.com

Web : www.maywahcn.com

Add : Bldg. A, Jufeng Decheng Ind. Zone, No. 319 Yilong Road, Jinxia Community, Chang'an Town,
Dongguan City, Guangdong Province, China

10 years professional R&D and produce experience and support OEM/ODM services

Company Profile

Rich experience Excellent quality Smart&Green



Dongguan MayWah Electronics Co., Ltd. was established in 2010. It's a new science and technology enterprise which focus on photovoltaic energy. Maywah integrating research& development, production and sales in simultaneously; And at the same time it continuous innovate application technology and products and achieved significant results.

MayWah main products have solar micro-inverter, solar connectors, solar cable and solar related solar products. And solar inverter and solar connector got a number of patented technology and international certification (including TUV, CE, ROHS, REACH ,UKCA). Good market forward-looking, excellent product quality and best after-sales service help us get the recognition of the majority customers at home and abroad friends.

We believe that“people-oriented,quality based on”will makes MayWah and all the customers on the way to the bright future.

Qualification Certificate



Product Catalog

- Company Profile 01/02
- Qualification Certificate 03
- Product Catalog 04
- Application Field 05/06
- Product Description 07/20
- MaySun Series 07/16
- Indoor Mini Soalr Grid Tie Inverter 17/18
- Wind Grid Tie Inverter 19/20
- Production Workshop 21/22

Application Field

Micro Inverter Application

Home system



Outdoor farm



Ground power station



Commercial roof



Wind power station



Communication station



Product Description

-----MaySun Series



Product advantages

1. Compared with the string grid tie inverter, the independent MPPT efficiently converts each PV module and reduces the influence of obstructions
2. Low voltage input, reducing the risk of man-made electric shock, safer to use
3. Newly designed die-casting aluminum alloy shell and matched with beautiful colors makes this micro inverter attractive and practical
4. 10 years of independent R&D and production experience, master the latest generation of micro-inverter technology
5. Multiple production lines can meet the demands of customers such as OEM/ODM in large quantities

Product Features

- MPPT(maximum power point tracking),effectively track and lock maximum power output of solar panels
- When the inverter track the maximum power point of the solar panel, it will automatically locked and with stable output
- 4 independent MPPT (MPPT)
- Standard MC4 input port, easy and safe installation
- Integration AC output port
- Pure sine wave output
- Anti-islanding protection function: inverter will be automatically stop output when the utility grid off or fault
- Over-temperature protection. short current protection and over-load protection
- IP65 waterproof function
- Build-in intelligent WIFI communication function APP monitoring
- Die-casting aluminum alloy shell design, fast heat dissipation & not easy to deform
- Global grid voltage/frequency automatic identification

◆ MaySun Series (300W-500W)

Product information



Maysun 300W

- Series model: MaySun300W -500W
- Power: 300W-500W
- Input voltage: 22-60V
- Output voltage: 90-140V/180-260V
- AC frequency: Auto
- Communication: WIFI
- Certificate: CE/ROHS/REACH
- Unit size : 20.5cm x 18cm x 4cm
- Unit weight : 0.83kg
- Box size : 21.8cm x 20.8cm x 10.1cm
- Box G.W : 1.25kg
- Carton size : 53.5cm x 22.7cm x 46.3cm
- Carton G.W : 13.2kg(10pcs)

Build-in intelligent WIFI communication function



Please use a smart device (smart phone or tablet) to scan the right QR code (you can also use "Android App Store" or "Apple App Store" search for "Smart Life") download and install the "Smart Life" App correctly.

Download " Smart Life" APP, through the APP, we can monitor the working condition of each micro inverter in real time.

Packing list



Micro inverter / 1pc



Mounting accessories / 1set



Micro inverter User Manual / 1pc



AC Bus Cable / 1pc

PARAMETER TABLE

Model	MaySun300	MaySun350	MaySun400	MaySun450	MaySun500	
Input Data(DC,PV)						
Number of Input MC4 Connector	1set					
MPPT Voltage Range	28V-55V					
Operation Voltage Range	20V-60V					
Maximum Input Voltage	60V					
Startup Voltage	20V					
Maximum Input Current	10A	11.66A	13.33A	15.33A	16.66A	
Output Data(AC)						
Single-Phase Grid Type	120V / 230V					
Rated Output Power	295W	330W	380W	430W	480W	
Maximum Output Power	300W	350W	400W	450W	500W	
Nominal Output Current	@120VAC	2.5A	2.75A	3.16A	3.58A	4A
	@230VAC	1.3A	1.43A	1.65A	1.86A	2.09A
Nominal Output Voltage	120VAC / 230VAC					
Default Output Voltage Range	@120VAC : 80V-160V / @230VAC : 180V-280V					
Nominal Output Frequency	50Hz / 60Hz					
Default Output Frequency Range	@50Hz : 47.5Hz-52.5Hz / @60Hz : 57.5Hz-62.5Hz					
Power Factor	>0.99					
Total Harmonic Distortion	THD <5%					
Efficiency						
Peak Efficiency	95%					
CEC Weighted Efficiency	@120VAC : 92.5% / @230VAC : 93.5%					
Nominal MPPT Efficiency	99.9%					
Night Power Consumption	<700mW					
Mechanical Data						
Operating Ambient Temperature Range	-40°C to +65°C					
Storage Temperature Range	-40°C to +85°C					
Dimensions (W x H x D)	18cm x 20.5cm x 4cm					
Weight	0.83kg					
Max Current of AC Bus Cable	20A					
Waterproof Grade	IP65					
Cooling Mode	Natural Convection - No Fan					
Other Features						
Communication	WIFI With Cloud Monitoring					
Transformer Design	High Frequency Transformers, Galvanically Isolated					
Integrated Ground	Equipment ground is provided by the PE in the AC cable. No additional ground is required.					
Protection Functions	Isolated Island Protection, Voltage Protection, Frequency Protection, Temperature					
Design Compliance	CE etc.					

◆ MaySun Series (600W-1000W)

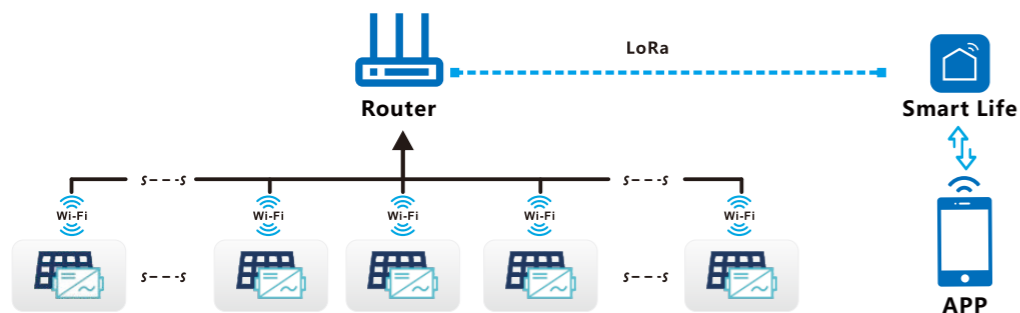
Product information



Maysun 600W

- Series model : MaySun600W -1000W
- Power : 600W-1000W
- Input voltage : 22-60V
- Output voltage : 90-140V/180-260V
- AC frequency : Auto
- Communication : WIFI
- Certificate : CE/ROHS/REACH
- Unit size : 23cm x 21.5cm x 4cm
- Unit weight : 1.22kg
- Box size : 25.8cm x 23.8cm x 10.1cm
- Box G.W : 1.86kg
- Carton size : 54cm x 25.5cm x 28cm
- Carton G.W : 9.9kg(5pcs)

Communication mode



- ☑ CO-2 induced environmental analysis
- ☑ Inverter temperature
- ☑ Daily and total energy generation in kWh
- ☑ Online switch for the inverter start stop
- ☑ Actual DC input voltage, current and power
- ☑ Historical (daily, weekly, monthly) power curve
- ☑ Actual AC output voltage, current and power

Packing list



Micro inverter / 1pc



Mounting accessories / 1set



Micro inverter User Manual / 1pc



AC Bus Cable / 1pc

PARAMETER TABLE

Model	MaySun600	MaySun700	MaySun800	MaySun900	MaySun1000	
Input Data(DC,PV)						
Number of Input MC4 Connector	2sets					
MPPT Voltage Range	28V-55V					
Operation Voltage Range	20V-60V					
Maximum Input Voltage	60V					
Startup Voltage	20V					
Maximum Input Current	2*10A	2* 11.66A	2*13.33A	2* 15.33A	2* 16.66A	
Output Data(AC)						
Single-Phase Grid Type	120V / 230V					
Rated Output Power	580W	650W	760W	850W	950W	
Maximum Output Power	600W	700W	800W	900W	1000W	
Nominal Output Current	@120VAC	4.83A	5.41A	6.33A	7.08A	7.91A
	@230VAC	2.52A	2.82A	3.3A	3.69A	4.13A
Nominal Output Voltage	120VAC / 230VAC					
Default Output Voltage Range	@120VAC : 80V-160V / @230VAC : 180V-280V					
Nominal Output Frequency	50Hz / 60Hz					
Default Output Frequency Range	@50Hz : 47.5Hz-52.5Hz / @60Hz : 57.5Hz-62.5Hz					
Power Factor	>0.99					
Total Harmonic Distortion	THD <5%					
Efficiency						
Peak Efficiency	95%					
CEC Weighted Efficiency	@120VAC : 92.5% / @230VAC : 93.5%					
Nominal MPPT Efficiency	99.9%					
Night Power Consumption	<700mW					
Mechanical Data						
Operating Ambient Temperature Range	-40°C to +65°C					
Storage Temperature Range	-40°C to +85°C					
Dimensions (W x H x D)	21.5cm x 23cm x 4cm					
Weight	1.22kg					
Max Current of AC Bus Cable	20A					
Waterproof Grade	IP65					
Cooling Mode	Natural Convection - No Fan					
Other Features						
Communication	WIFI With Cloud Monitoring					
Transformer Design	High Frequency Transformers, Galvanically Isolated					
Integrated Ground	Equipment ground is provided by the PE in the AC cable. No additional ground is required.					
Protection Functions	Isolated Island Protection, Voltage Protection, Frequency Protection, Temperature					
Design Compliance	CE etc.					

◆ MaySun Series (1100W-1500W)

Product information



Maysun 1200W

- Series model: MaySun1100W -1500W
- Power: 1100W-1500W
- Input voltage: 22-60V
- Output voltage: 90-140V/180-260V
- AC frequency: Auto
- Communication: WIFI
- Certificate: CE/ROHS/REACH
- Unit size : 31.5cm x 29cm x 4cm
- Unit weight : 2.42kg
- Box size : 35.3cm x 28.3cm x 10cm
- Box G.W : 3.17kg
- Carton size : 46.5cm x 30.2cm x 37.5cm
- Carton G.W : 13.4kg(4pcs)

Project Case



Packing list



Micro inverter / 1pc



Mounting accessories / 1set



Micro inverter User Manual / 1pc



AC Bus Cable / 1pc

PARAMETER TABLE

Model	MaySun1100	MaySun1200	MaySun1300	MaySun1400	MaySun1500	
Input Data(DC,PV)						
Number of Input MC4 Connector	4sets					
MPPT Voltage Range	28V-55V					
Operation Voltage Range	20V-60V					
Maximum Input Voltage	60V					
Startup Voltage	20V					
Maximum Input Current	4*9A	4*10A	4*10.8A	4* 11.66A	4* 12.5A	
Output Data(AC)						
Single-Phase Grid Type	120V / 230V					
Rated Output Power	1080W	1150W	1250W	1350W	1450W	
Maximum Output Power	1100W	1200W	1300W	1400W	1500W	
Nominal Output Current	@120VAC	9A	9.58A	10.41A	11.25A	12.08A
	@230VAC	4.69A	5A	5.43A	5.8A	6.3A
Nominal Output Voltage	120VAC / 230VAC					
Default Output Voltage Range	@120VAC : 80V-160V / @230VAC : 180V-280V					
Nominal Output Frequency	50Hz / 60Hz					
Default Output Frequency Range	@50Hz : 47.5Hz-52.5Hz / @60Hz : 57.5Hz-62.5Hz					
Power Factor	>0.99					
Total Harmonic Distortion	THD <5%					
Efficiency						
Peak Efficiency	95%					
CEC Weighted Efficiency	@120VAC : 92.5% / @230VAC : 93.5%					
Nominal MPPT Efficiency	99.9%					
Night Power Consumption	<700mW					
Mechanical Data						
Operating Ambient Temperature Range	-40°C to +65°C					
Storage Temperature Range	-40°C to +85°C					
Dimensions (W x H x D)	31.5cm x 29cm x 4cm					
Weight	2.42kg					
Max Current of AC Bus Cable	40A					
Waterproof Grade	IP65					
Cooling Mode	Natural Convection - No Fan					
Other Features						
Communication	WIFI With Cloud Monitoring					
Transformer Design	High Frequency Transformers, Galvanically Isolated					
Integrated Ground	Equipment ground is provided by the PE in the AC cable. No additional ground is required.					
Protection Functions	Isolated Island Protection, Voltage Protection, Frequency Protection, Temperature					
Design Compliance	CE etc.					

MaySun Series



WVC -1200W

Features

- MPPT(maximum power point tracking), effectively track and lock maximum power output of solar panels.
- When the inverter track the maximum power point of the solar panel, it will automatically locked and with stable output.
- 4 independent MPPT(MPPT).
- Standard MC4 input port,easy and safe installation.
- Integration AC output port.
- Pure sine wave output.
- Anti-islanding protection function: inverter will automatically stop output when the utility grid off or fault.
- Over-temperature protection, short current protection and over-load protection.
- IP65 waterproof function.

Project Case



WVC- 600W

Main Data

Input Data(DC)	WVC-1200W		WVC- 600W		WVC-300W	
Recommend PV modules	300W×4pcs		300W×2pcs		300W×1pcs	
Maximum DC input voltage	50V					
MPPT voltage range	25-40V					
Operation voltage range	22-50V					
One way maximum input current	20A					
AC OUTPUT	MaySun 1200W		MaySun 600W		MaySun 300W	
	@120VAC	@230VAC	@120VAC	@230VAC	@120VAC	@230VAC
Peak power output	1200Watt		600Watt		300Watt	
Rated output power	1150Watt	1150Watt	600Watt	600Watt	300Watt	300Watt
Rated output current	9.58A	5A	4.8A	2.4A	3.2A	1.6A
Rated voltage range	90-160VAC	180-260VAC	90-160VAC	180-260VAC	90-160VAC	180-260VAC
Rated frequency range	50Hz/60Hz Auto					
Power factor	>98%					
Maximum units per branch	3pcs (single phase)	5pcs (single phase)	6pcs (single phase)	10pcs (single phase)	12pcs (single phase)	20pcs (single phase)
Permission Max-current per branch	30A					
Dimensions (WxHxD)	370mm×305mm×38mm		289mm×200mm×38mm		191mm x 176mm x 38mm	
Weight	2.85KG		1.5KG		0.85KG	

Indoor Mini Soalr Grid Tie Inverter

GTI-LED series



GTI300W



GTI500W/600W



GTI800W/1000W

WV-LED series



WV300W



WV500W/600W



WV800W/1000W

Features

- Adapt precise MPPT and APL function, the inverter automatically adjust the solar panels of maximum output.
- AC phase angel of 0 through isolation amplifier then input to the MCU for high-precision detection and analysis. The phase shift rate is less than 1%, thus achive high-precision with phase modulation AC output together.
- When the grid utility fault or off, the inverter will use the anti-islanding protection to shut down the system automatically.
- Adapt SPWN technology to make pure sine wave output.
- Multi in parallel to achive large power output.



Project Case



Model	300W	500W	600W	1000W
Max. output	300Wp	500Wp	600Wp	1000Wp
Rated output	270W	450W	540W	900W
DC Max. voltage	VpvDC30.2VDC/50VDC			
Voltage Range	Vpv 10.5V~30VDC / 22-50VDC			
Power factor	99%			
Over-current Protection	Fuse			
AC voltage range	90~140VAC/180~260VAC			
AC frequency range	55Hz~63Hz/45Hz~53Hz			
Phase difference	<1%			
Islanding protection	VAC; f AC			
short-circuit protection	Limit current			
Display	LED			
Installs Way	Wall hanging			
Cooling	Fan			
stand-by power consumption	<2W			
ambient temperature range	-25 °C~60°C			
ambient humidity	Indoor Type Design			

Wind Grid Tie Inverter



Model: WG1000W WG2000W

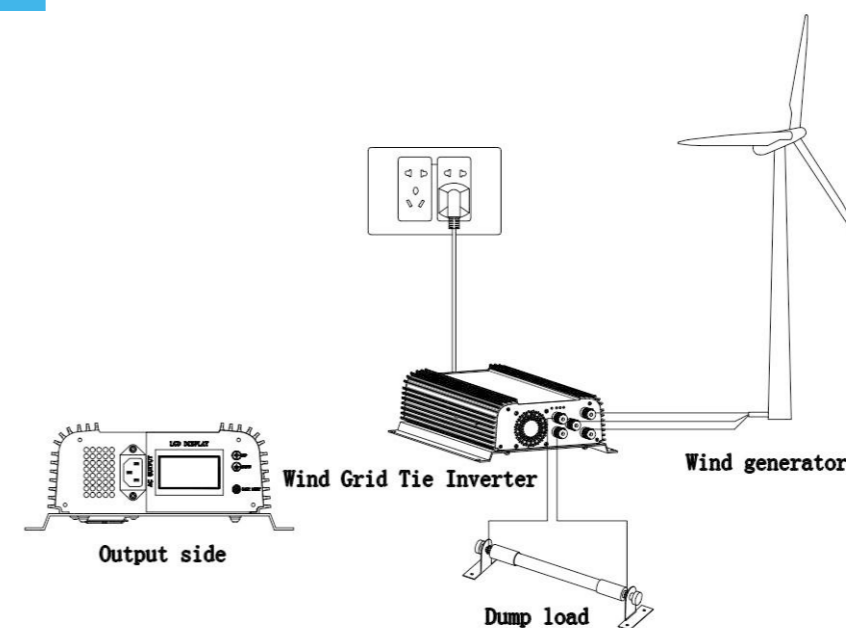


Features

Wind series three-phase AC input wind energy grid-connected inverter.

- Build in Controller
- Extra-position Dump Load
- Suitable for 24V, 48V wind turbine and grid-connected inverter
- LCD display
- Can synchronous connect to grid and adapt frequency automatically
- WIFI communication (optional)

Apply



Wind grid-series models	WG1000W-WAL	WG2000W-WAL
Rated AC output power	1000W	2000W
DC Input Voltage Range (the test point is at the output of the rectifier)	22-60VDC	45-90VDC
Max output power factor	99%	
DC input Reverse voltage protection	Fuse	
AC output voltage range	Auto recognition	
AC frequency range	46Hz~65Hz	
Output short circuit protection	Yes	
Output short circuit protection	Current-limiting	
Display	LED or LCD	
Cooling	Colling	
Night Power	<1W	
Ambient temperature range	-10 °C~45°C	
Waterproof	Indoor Type Design	
dump load resistors parameter	$R = V^2/P = 54*54/600 = 4.9$ (ohm)	

Production Workshop

-----Factory



-----Product



-----Pack And Ship



Factory products with high quality
Source manufacturer ,Feel comfortable to buy